

Wireless Flood and Temperature Detector

GENERAL

The 2GIG-FT100-345 is a fully supervised, tamper protected one-way 345 MHz detector. It will monitor the ambient temperature and/or will detect a wet/dry flood condition. The detector reports wet/dry conditions and temperature to the panel. The detector offers flexible signal transmission options, supporting both encrypted and non-encrypted modes, and is compatible with 2GIG wireless alarm systems.

Flood Conditions

Once the detector probe detects the presence of water for one (1) minute, the integral transmitter will send a loop 1 wet alarm transmission to the panel. The probe will also send a restore (dry) report when the presence of liquid is no longer detected by the flood probe for one (1) minute. For flood reporting the detector requires the installation of the supplied flood probe. The detector is capable of detecting clean or dirty fresh water, salt water, or tap water.

Temperature Conditions

Heat:

- If the temperature is more than 95°F (35°C) for five (5) minutes, the device will send a loop 2 transmission.
- If the temperature is less than 95°F (35°C) for five (5) minutes, the device will send a loop 2 clear.

Cold:

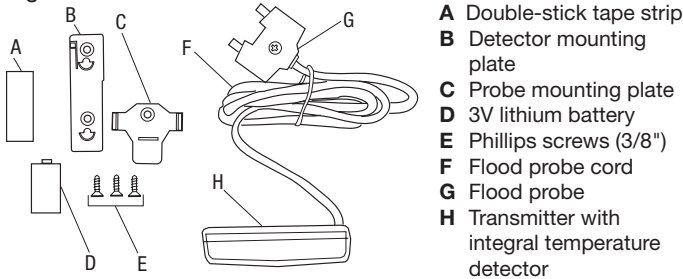
- If the temperature is less than 41°F (5°C) for five (5) minutes, the device will send a loop 3 transmission.
- In the temperature is more than 41°F (5°C) for five (5) minutes, the device will send a loop 3 clear.

Contents

Verify that the package includes the following:

- (1) 2GIG® Flood/Temperature Detector
- (1) Detector mounting plate
- (1) 3V lithium battery (Panasonic CR15H270 uninstalled)
- (3) 3/8" Phillips screws
- (1) Double-stick tape strip
- (1) Probe mounting plate

Figure 1



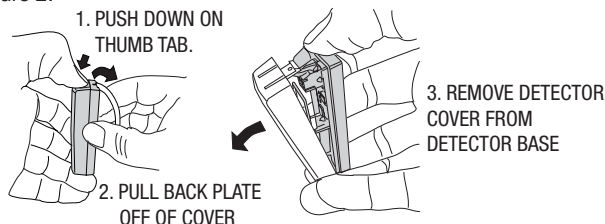
Installation Tools Required

- Phillips screwdriver

Installing and Replacing Battery

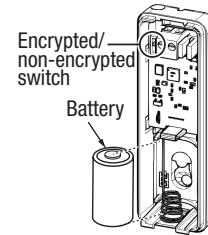
1. To open the detector case, grip the base of the detector case, then place thumb on tab and push down until case separates, as shown in Figure 2.

Figure 2



2. Install or replace battery as shown in Figure 3.

Figure 3



Encrypted/Non-Encrypted Mode

The detector is capable of transmitting signals in encrypted mode or non-encrypted mode. The mode is set through a switch inside the detector (see Figure 3). By default, the factory setting is *non-encrypted* mode. To change to *encrypted* mode:

1. Remove the top plastic housing, and, if already installed, remove the battery from the board and wait for 10 seconds.
2. Locate the dip switch (see Figure 3) and note the switch setting: ON indicates encrypted mode, and 1 is non-encrypted mode.
3. Move the switch position to ON for encrypted mode.
4. Reinsert the battery and close the housing.

If the detector was previously learned into a panel in a different mode, reset the zone and re-enroll the device. If applicable, enter the device equipment code in sensor zone programming.

Installing a New Battery and System Programming

NOTE: Do not install battery until panel is in Sensor Programming Mode.

1. Place panel in Sensor Programming mode.
2. Make sure the device has been off for at least 10 seconds, then reinstall the battery and close the device.

Replacement Battery Installation

NOTE: If battery has been previously installed:

1. Remove battery and dispose of properly (following state regulations).
2. Wait two (2) seconds, then replace battery and close the device.

Installing/Mounting Flood/Temperature Detector

The 2GIG-FT100-345 Flood and Temperature Detector includes two methods of installation:

1. Double Stick Tape Installation (See Figure 4).
2. Screw/Mounting Plate Installation (See Figure 5).

It is strongly recommended that the Flood/Temperature Detector be mounted using screws (provided) and Mounting Plate (provided).

Removing Flood/Temperature Detector from Mounting Plate

Figure 4

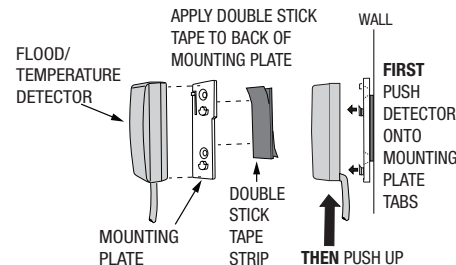
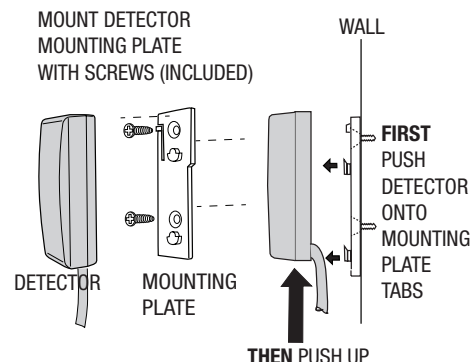


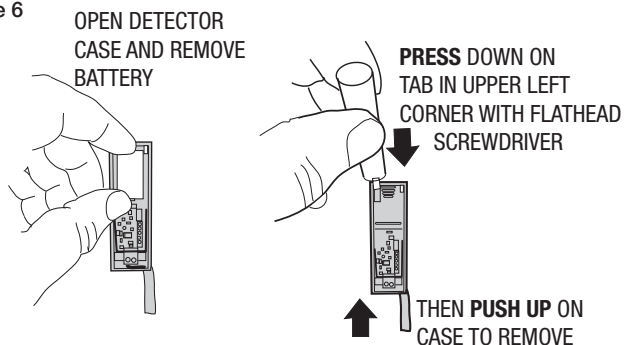
Figure 5



If Flood/Temperature Detector needs to be removed from the wall (for changing out battery), open detector case as shown in Figure 2. Remove battery, then press Down on release tab with flathead screwdriver and pull device UP as shown in Figure 6.

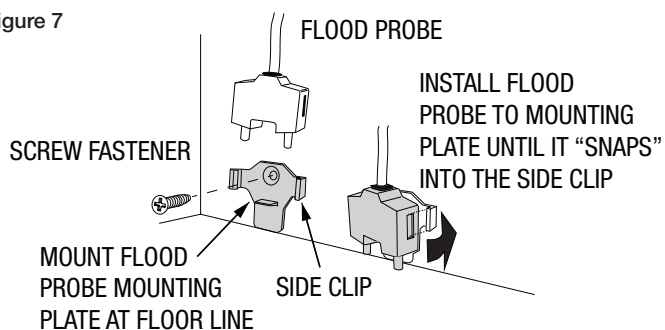
Mounting Flood Probe

Figure 6



The Flood Probe must be mounted at floor level using the Probe Mounting Plate and screw (included) mount as shown in Figure 7.

Figure 7



Flood/Temperature Specifications

Operating Temperature	32° to 120° F (0° to 49° C)
Operating Relative Humidity	5 to 95%, non-condensing
Operating Frequency	345 MHz
Battery Type	CR2 3V lithium battery
Projected Battery Life	5 years
Supervisory Interval	70 minutes
Equipment Code	2065 (encrypted); 1065 (non-encrypted)
Panel Programming Sensor Loop	Loop 1: Water; Loop2: Heat; Loop3: Cold

REGULATORY INFORMATION

We, Nice North America LLC of 5919 Sea Otter Place STE 100, Carlsbad, CA 92010, declare under our sole responsibility that the device, 2GIG-FT100-345, complies with Part 15 of the FCC rules.

FCC & IC Notice

This device complies with Part 15 of the FCC Rules and Industry Canada license exempt standard(s). Operation is subject to the following two conditions:

- (1) This device may not cause harmful interference, and
- (2) This device must accept any interference received, including interference received that may cause undesired operation.

Le présent appareil est conforme aux CNR d'Industrie Canada applicables aux appareils radio exempts de licence. L'exploitation est autorisée aux deux conditions suivantes:

- (1) l'appareil ne doit pas produire de brouillage, et
- (2) l'utilisateur de l'appareil doit accepter tout brouillage radioélectrique subi, même si le brouillage est susceptible d'en compromettre le fonctionnement.

Cet équipement est conforme aux limites d'exposition aux rayonnements de la IC établies pour un environnement non contrôlé. Cet équipement doit être installé et fonctionner à au moins 20cm de distance d'un radiateur ou de votre corps. Cet émetteur ne doit pas être co-localisé ni fonctionner en conjonction avec une autre antenne ou un autre émetteur.

This Class B digital apparatus complies with Canadian ICES-003

Cet appareil numérique de la classe B est conforme à la norme NMB-003 du Canada.

This equipment has been tested and found to comply with the limits for a Class B digital device, pursuant to Part 15 of the FCC Rules. These limits are designed to provide reasonable protection against harmful interference in a residential installation.

This equipment generates, uses, and can radiate radio frequency energy and, if not installed and used in accordance with the instructions may cause harmful interference to radio communications. However, there is no guarantee that interference will not occur in a particular installation. If this equipment does cause harmful interference to radio or television reception, which can be determined by turning the equipment off and on, the user is encouraged to try to correct the interference by one or more of the following measures:

- Reorient or relocate the receiving antenna.
- Increase the separation between the equipment and receiver
- Connect the equipment into an outlet on a circuit different from that to which the receiver is connected
- Consult the dealer or an experienced radio/TV technician to help.

FCC

Federal Communication Commission (FCC) Radiation Exposure Statement:

When using the product, maintain a distance of 20cm from the body to ensure compliance with RF exposure requirements.

IC

Radiation Exposure Statement:

This equipment complies with IC radiation exposure limits set forth for an uncontrolled environment. This equipment should be installed and operated with minimum distance 20cm between the radiator & your body.

WARNING: Changes or modifications not expressly approved by the manufacturer could void the user's authority to operate the equipment.

LIMITED WARRANTY

This Nice North America LLC product is warranted against defects in material and workmanship for two (2) years. This warranty extends only to wholesale customers who buy direct from Nice North America LLC or through Nice North America normal distribution channels. Nice North America does not warrant this product to consumers. Consumers should inquire from their selling dealer as to the nature of the dealer's warranty, if any.

There are no obligations or liabilities on the part of Nice North America for consequential damages arising out of or in connection with use or performance of this product or other indirect damages with respect to loss of property, revenue, or profit, or cost of removal, installation, or reinstallation. All implied warranties for functionality, are valid only until the warranty expires. This Nice North America Warranty is in lieu of all other warranties expressed or implied.



Customer Service

760-438-7000
Monday – Friday, 5 a.m. – 4:30 p.m. PST
Saturday, 7 a.m. – 3:30 p.m. PST
www.2gig.com

Nice North America LLC

5919 Sea Otter Place, Suite 100
Carlsbad, CA 92010

Nice Niceforyou.com